


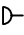



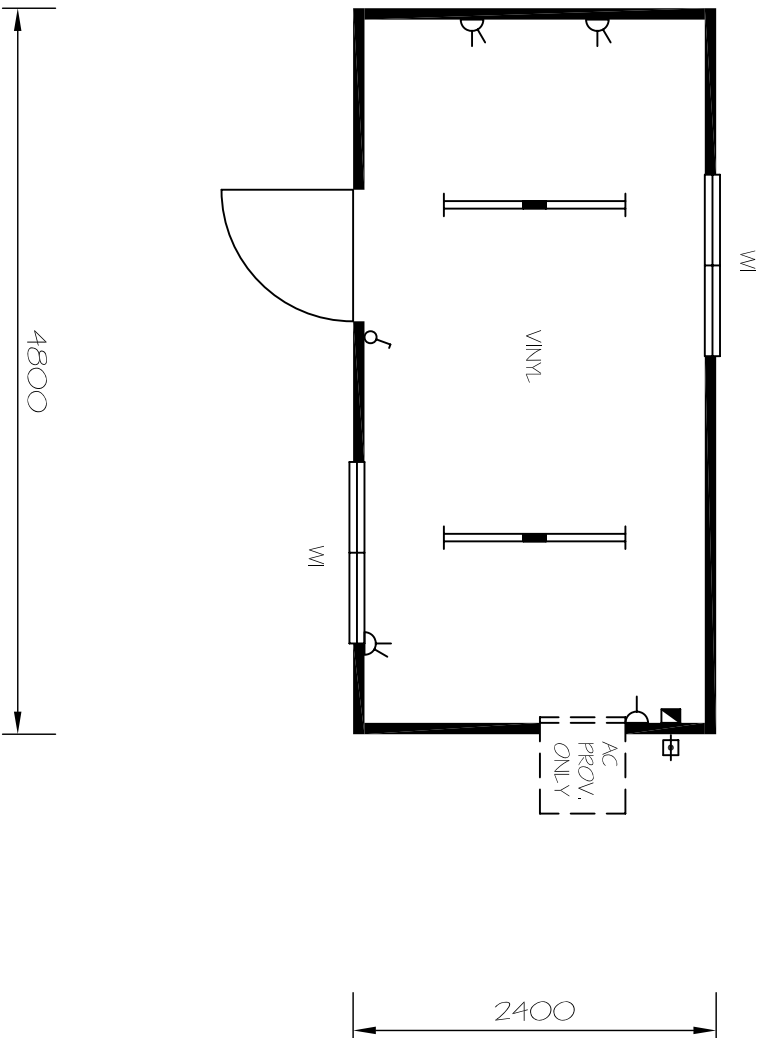


LEGEND:

-  ELECTRICAL POINT OF ENTRY SWITCHBOARD + EARTH LEAKAGE
-  LIGHTSWITCH
-  DOUBLE GPO 10 amp
-  SINGLE GPO 10 amp
-  PROVISION ONLY FOR AIR CONDITIONER
-  2x36w FLUORESCENT LIGHT
-  1200 H x 1200 W WINDOW



WN 4824 - Multi Purpose Unit